

\$270,000 - 1524 Alabama Highway 205, Albertville

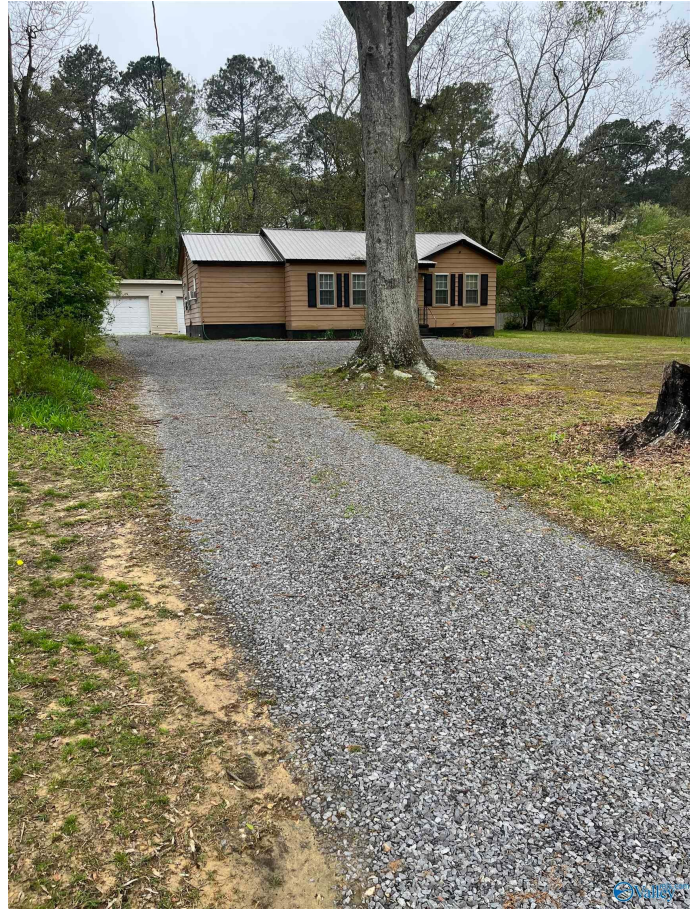
MLS® #1831136

\$270,000

3 Bedroom, 2.00 Bathroom, 1,158 sqft
Residential on 3.63 Acres

Metes And Bounds, Albertville, AL

SO MUCH POTENTIAL WITH THIS PROPERTY!!!! 3.63 Acres inside ALBERTVILLE CITY LIMITS, 3 PARCELS INCLUDING HOUSE WITH 3 BEDROOMS/ 2 BATHROOMS WITH APPROX 1158 SQFT, PLUMBING REPLACED 2010, ROOF REPLACED 2019, SCREENED IN PORCH, DECK WITH HOT TUB, 2 CAR DETACHED GARAGE..... APPROX 1800 SQFT WAREHOUSE SPACE, 1500 SQFT BARN WITH 900 SQFT HOME THAT NEEDS TOTAL REMODELED, BEAUTIFUL TREES, SECURITY SYSTEM TO REMAIN, DOOR BELL RING AND CAMARA DOES NOT STAY, PROPERTY IS SOLD AS IS....



Essential Information

MLS® #	1831136
Price	\$270,000
Bedrooms	3
Bathrooms	2.00
Full Baths	2
Square Footage	1,158
Acres	3.63
Type	Residential
Sub-Type	Single Family Residence
Style	Ranch/1 Story
Status	Closed

Community Information

Address	1524 Alabama Highway 205
Subdivision	Metes And Bounds
City	Albertville
County	MARSHALL
State	AL
Zip Code	35950

Amenities

Parking	Two Car Garage
# of Garages	2

Interior

Heating	Propane
Cooling	Window 2
Fireplaces	None
Stories	One

School Information

Elementary	Albertville
Middle	Albertville
High	Albertville

Listing Details

Listing Office	Main Street Realty Plus, LLC
Listing Contact Email	greg@mainstreetrealtyplus.com
Listing Contact Phone	256-400-1335



Properties marked with the NALMLS icon are provided courtesy of the North Alabama Multiple Listing Service, Inc. (NALMLS) IDX Database. All information provided is deemed reliable but is not guaranteed and should be independently verified. Compensation offer is made only to participants of the MLS where the listing is filed. Copyright NALMLS, Inc.

Listing information last updated on May 19th, 2024 at 7:41am CDT